



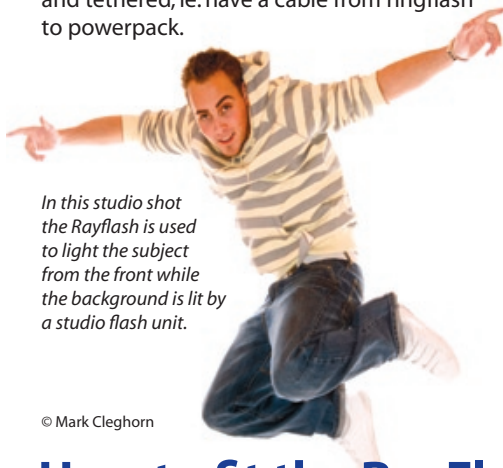
The one and only!

Ringflash Adapter for portable flash units



© Mark Cleghorn

The RayFlash Ringflash Adapter is unique! It was developed by a professional photographer from the Czech Republic and was designed to be as light and as portable as possible. There are no electronics, no flashtubes and no cumbersome cables! It uses a clever system of internal prisms, reflectors and light-shapers to distribute the light emitted from the flash unit evenly around the large diameter of the ringflash adapter. This creates the same lighting effect normally only available from ringflash units made by studio flash equipment manufacturers, which are expensive, heavy and tethered, i.e. have a cable from ringflash to powerpack.



In this studio shot the Rayflash is used to light the subject from the front while the background is lit by a studio flash unit.

© Mark Cleghorn

The RayFlash creates a very special lighting effect: a "3D shadow-wrapped look". Because all light originates from the front, i.e. from around the lens, it produces a virtually shadowless look on the front of your subject, while a soft even shadow appears around the edges. It is ideally suited for fashion, portrait and beauty images as a main or fill-in light.

The RayFlash does not change the colour temperature of the flash unit and the additional weight can easily be accommodated by the on-camera flash unit.

The RayFlash model range is made to fit the Canon 580EX MKI & 580EX MKII, and the Nikon SB600, 800 & 900. Due to its large inner diameter, the Ringflash Adapter will accept almost all lenses from Nikon and Canon. *For model range, see chart over the page.*



Exposure control: when using Canon or Nikon cameras (or their derivatives) all TTL functions are operational as usual, as well as in manual mode. In manual control, the exposure is measured by use of a light meter or through test-shots on a digital camera.



© Mark Cleghorn

Without the RayFlash Ringflash Adapter



© Mark Cleghorn

With the RayFlash Ringflash Adapter

Light output: The RayFlash Ringflash Adapter is very efficient and the loss of light is surprisingly low, approx. one f-stop!

ISO	Flash Power	Distance	f-stop (Canon 580EX II)	f-stop (Nikon SB800)
100	1/1	1.8m / 6ft	8.0	7.5

How to fit the RayFlash Ringflash Adapter

The RayFlash Ringflash Adapter is mounted to the front of a portable flash unit, for example the Canon 580 or Nikon SB800, and it is small and lightweight enough to allow complete mobility!



Line up the flash unit with the rear receptacle of the RayFlash Adapter



Push the flash unit in as far as it will go



Turn the pressure plate at the top of the RayFlash Adapter clockwise to lock



© Mark Cleghorn

RayFlash Ringflash Model range

The RayFlash Ringflash Adapter models RAN & RAC are for use with flash units from **Nikon** (SB600/800/900) and **Canon** (580EX & 580EX MKII).

Code	The RayFlash Ringflash Adapter to fit
RAN160	NIKON SB800/600 Flash & the following camera bodies: D700, 300, 200, 100, 90, 80, 70, 60, 50, 40, 40X, D7000, D5000, D3000
RAN170	NIKON SB800/600 Flash & the following camera bodies: D1, D2, D3, D700
RAN179	NIKON SB900 Flash & the following camera bodies: D700, 300, 200, 100, 90, 80, 70, 60, 50, 40, 40X, D7000, D5000, D3000
RAN189	NIKON SB900 Flash & the following camera bodies: D1, D2, D3, D700
RAC160-2	CANON 580EX MKII & the following camera bodies: 550D, 450D, 550D, 400D, 350D, 1000D
RAC170-2	CANON 580EX MKII & the following camera bodies: 5D, 60D, 50D, 40D, 30D, 20D, 10D
RAC175-2	CANON 580EX MKII & the following camera bodies: 5D MKII, D7 & 1D series

• For use with **Nikon SB600** a small adapter wedge is available FOC!

• For use with **Canon 580EX MKI**: use any of the above listed RAC models with an adapter wedge available FOC!

All RayFlash Ringflash models

Price **£129.00 + VAT** **£154.80 incl. VAT**

Technical Specification

Code	Outer Diameter (mm)	Inner Diameter (mm)	Distance ringflash - centre to centre of flash tube	Weight (Grammes)
RAN160	175	103	160	462
RAN170	175	103	170	478
RAN179	175	103	170	480
RAN189	175	103	180	485
RAC160-2	175	103	160	485
RAC170-2	175	103	170	490
RAC175-2	175	103	175	495

All measurements are in mm and grammes.

Flash units from manufacturers other than Canon & Nikon:

The RayFlash Adapter can be used with many other flash units from differing manufacturers, such as SONY, KONICA, MINOLTA, SIGMA, METZ, NISSIN & OLYMPUS. A list is available from the Flaghead Photographic website, or contact us directly for details.

The RayFlash Rotator

Fast positioning anywhere around the lens.



RayFlash Rotator Price **£129.00 + VAT** **£154.80 incl. VAT**

New RayFlash Product



The revolutionary RayFlash Rotator

From the inventor of the RayFlash Ringflash Adapter comes another unique product:

A 360° rotating flash bracket with fast, continuous positioning around the lens.

No shadow or Monster shadow: your choice!

- revolutionary design
- quick & easy mounting without tools
- fast positioning anywhere around the lens
- the light will always be where you want it
- use with Nikon & Canon cameras for full TTL use

The RayFlash Rotator is the first rotating flash bracket in the world with full TTL capabilities (Nikon & Canon). It allows the flash unit to be positioned anywhere around the lens to avoid harsh side shadows normally associated with an on-camera flash in the vertical position. OR, for very dramatic light effects, use the flash position to create monster shadows!

Mounting the Rotator is easy, no need for tools. The package comes with a set of mounting brackets to suit all sizes of cameras.

The Rotator Specifications

Code:

RRC - Canon Version

RRN - Nikon Version

Diameter: 138 mm

Mounting: Canon, Nikon

Weight: 495g

DISTRIBUTION BY www.flaghead.co.uk

FLAGHEAD
Photographic Limited

P.O. Box 6143, Poole, Dorset, BH12 9AS, UK. Tel: +44 (0)1202 733123
Fax: +44 (0)1202 737428 E-mail: info@flaghead.co.uk www.flaghead.co.uk